

South Plains Reflector

South Plains Presbyterian Church

Corner of Black Cat & Louisa Roads

P.O. Box 277

Keswick, VA 22947-0277

(434) 293-4112

southplainspc.org

southplainspc@gmail.com



January 2012

**DR. DAVID K. GARTH
PASTOR**

Sunday Worship

1st Service

8:30am - 9:30am

2nd Service

11:00am - 12:00pm

Christian Education

Classes for all ages meet

9:45am to 10:30am

each Sunday

September through May

Childcare for

infants through 2nd grade

HIGHLIGHTS

**Congregational
meetings
January 8
9:30 and noon**

**New Adult Sunday
School classes
see page 3**

REFLECTIONS FROM THE PASTOR'S STUDY

Again and again during the past twelve months, I have been reminded that I must not let my enthusiasm about moving into Kirk Hall blind me to the challenges ahead of us. We have luxuriated in space for fellowship dinners, an engaging Christmas pageant, the new adult classes, and a comfortable nursery area, to mention only the most obvious benefits. South Plains got a facelift, a new, smiling countenance to present to the world. Praise God!

With the joys, however, have come fresh challenges and old challenges in a different form. Among the familiar tests confronting us, I'll mention three: 1) bringing visitors into active participation in our mission; 2) caring for older members; 3) keeping in touch with the community and communities around us. Because of our rural location, we have to work a little harder to make our mission visible, to reach out to members in need, and to engage larger issues in the city and counties.

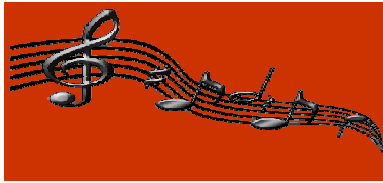
We also have some unfamiliar challenges testing our faith: 1) setting policies and procedures that keep Kirk Hall available and cared for; 2) making sure folks feel secure in a larger facility filled with more people; 3) telling the gospel of Christ Jesus clearly to a changing congregation. When I use the word 'congregation,' I mean more than the stated membership. We serve people who may or may not show up on the rolls, but who are nonetheless subjects of God's love. Every one of these challenges is a blessed privilege to serve Christ.

Thankfully, God has provided strong session leadership and willing disciples. The best is yet to come in the providence of the kingdom of heaven.

Keep praying.

David





CHRISTMAS CAROLING

There is nothing like caroling to put a bit of “jingle” in the Christmas season! Thank you to all the members and friends who joined in the festive Christmas caroling on December 18. With joyful voices and Christmas enthusiasm the carolers enjoyed several opportunities to share carols (...accompanied by rhythm band instruments). Then, after a drive-through visit to East Belmont’s

fabulous Christmas light-show, carolers were treated to a feast at the home of Anne Tinsler and her son Dick. Thank you, one and all.

South Plains Financial	Year to	2011
November	Date	Budget
Income		
Offering	204,888.75	196,000.00
Interest/Dividends	6.46	10.00
Other		
Total Income	204,895.21	196,010.00
Expense		
Ministerial	73,335.59	83,070.00
Administrative	13,126.43	14,650.00
Utilities	9,775.06	7,600.00
Buildings and Grounds	13,486.90	18,240.00
Worship and Music	11,302.94	14,330.00
Christian Education	1,463.99	3,160.00
Congregational Care	148.21	1,000.00
Fellowship	1,285.06	2,000.00
Long Range Planning	65.89	50.00
Finance	1,505.65	1,510.00
Evangelism	246.56	1,450.00
Benevolence and Mission	12,191.89	16,940.00
Trustees	4,329.51	5,345.00
Other	4,199.66	18,180.00
Total Expense	146,463.34	187,525.00
Net Gain/(Loss)	58,431.87	8,485.00

CHRISTMAS DECORATIONS

Special thanks to the crew of South Plains elves who decorated the church inside and out. Julie and Frank Keplinger coordinated the efforts and were ably assisted by many elves.



At the same time, Carl Buck and more elves were hard at work outside raking and making our grounds clean and beautiful.

Thank you, one and all!!

A CHRISMON CELEBRATION

Across the years South Plains has enjoyed the beauty of the Chrismon tree in the sanctuary. This year, with the opportunity to share the tree in Kirk Hall, the meaningful Chrismon tree became the focus of the annual Sunday School pageant. Thank you to all who participated:

Narrator: Bob Tracinski

Scripture Readers: Lisa Climer, Paul Cheek

Chrismons: Marion Thompson, Barbara Bowie, Bill Eastwood

Nativity:

Mary and Joseph: Sherry and Matt Esch

Angels: Lower Elementary class—Bess Brown, Zada Hall

Shepherds: Upper Elementary and Youth classes—Sallie Mason Wheeler, Addison Hall, Catherine Wheeler, Chris Buck, Jeff Buck

Sheep: Nursery/Pre-Kindergarten classes—Meredith Taylor, Evie Wayner, Madeline Esch, Sophie Wayner, Mallory Esch, Stephen Taylor, Robert Matics, Joseph Matics, Landon Creamer

Three Kings: Larry Day, Nick Creamer, Travis Taylor

Costumes: Linda Makranczy

Piano: Barbara Cain

Musicians' Coordinator: Mary Reitsma

Musicians: Addie Brown—flute; Grace Newman—flute; Bethany Reitsma—violin; Sharon Reitsma—flute



Sunday Morning Adult Study

WHAT'S NEW IN THE ADULT SUNDAY SCHOOL?

It is time for another discussion of contemporary Christian issues. Last semester we considered W. E. March's book "God's Tapestry". This semester from January 8 until the start of Lent (7 weeks) we will discuss Henri Nouwen's book "Our Greatest Gift: a meditation on dying and caring". Although the title may sound rather morbid, it is actually a very positive and uplifting book for adults of all ages and phases of life. It strives to address how we can live well, and then die well, as Christians. Nouwen offers many new ideas and challenges secular assumptions about "worthiness".

Throughout, the love he experiences with God and his brothers and sisters in Christ shines through. Ann Anderson will be leading the study. Copies of the study material will be available. For those who wish to purchase a copy, new and used editions are available. (Lyn Johnson got her copy from www.amazon.com for \$1.00 plus postage (grand total \$4.99).

For those who would prefer a more traditional Bible study, Lyn Johnson will continue to lead "Invitation to the Old Testament". Presented in 8 parts, we will be finishing the 3rd section (Moses and the Exodus) and moving on to part 4, "Joshua and the Promised Land".

Everyone is welcome to attend whichever class they prefer. May you grow in Spirit and faith as you enjoy fellowship with your Christian family.

Please contact Lyn Johnson, Ann Anderson or Kellee Eastwood with questions.

DECEMBER SESSION RECAP

At the December session meeting, after sharing concerns and prayer we approved:

- 2012 budget of \$204,510 for presentation at congregational meetings January 8 at 9:30am and noon
- Dale Dealtrey to preach January 1
- Doug Valentine as Treasurer and Linda Harrison as Clerk for indefinite terms
- A Quorum for stated session meetings of 50% of the ruling elders plus the moderator; and a quorum for meetings to receive members of two ruling elders plus the moderator
- Recommendations for the congregational meeting January 8:
 1. Quorum for congregational meetings will be 25 of the active members; no proxy votes are allowed
 2. Notice for congregational meetings shall be an announcement on two consecutive worship services
- Transfer of Chuck and Judy Young to Oak Island Church
- Mulch for the new playground
- Unspent funds from the mission budget sent to Louisa Earthquake Recovery Fund, Mission of Hope—Bolivia, Alliance for Interfaith Ministries, and Presbytery's Shared Missions
- "The Greatest Gift, Caring and Dying" for an adult Sunday School class in January

We also heard reports from committees that:

- Louisville Seminary will provide free tuition for all Master's students by 2015
- The Sunday School pageant written and directed by Pat Valentine, assisted by many others, was a success
- Evangelism published a fine ad for our Christmas activities
- A punch list for Martin Horn is being prepared
- Fellowship has events planned for the spring
- Lenten Bible study will be either in Kirk Hall or in homes

Session adjourned with prayer.





MISSION CRAFTERS

In January, Mission Crafters will return to its schedule of meeting on the third Sunday afternoon of each month. Crafters gather any time after fellowship following the 11am worship service and continue until about 4pm.

What happens at Mission Crafters? Some crafters knit and sew. Others work on non-sewing projects, like edging blankets for the Linus Project. We have a large supply of fleece for this project and need many

hands to complete the blankets. In these cold days, we need YOUR hands to help make these blankets that will be distributed by social service agencies, police, firefighters and other agencies. PLEASE come lend a hand. No skills are necessary—all you need is a heart for helping infants and children. NEXT MEETING: January 15th!



A LETTER FROM MICHAEL & RACHEL WELLER IN ETHIOPIA November 2011

Dear Family and Friends,

Greetings from three floors above the mile-and-a-half-high city of Addis Ababa. Michael and I arrived here a little over two weeks ago, nearly three years after leaving for an education upgrade.

Some of you know that our return was delayed when Michael had a heart attack shortly before our intended departure date. The care he received in the States was providential. Doctors identified the problem and prescribed certain medicines and lifestyle changes. One of our friends, an elder from the Oromo Church in Addis Ababa arranged for another elder and the pastor of that church to come to our house for a time of healing prayer.

We plan to live in Addis Ababa for a few months while we make living arrangements in Gambella. The drive to Gambella covers about 470 miles and parks us more than a mile lower than we started. We're hoping the lower elevation will be easier on Michael's heart and that the heat will not be harder on it.

Michael and I will both be traveling soon. We are planning trips to Gambella and South Sudan, working on the details even as I write. In Gambella I will do what I can to learn the state of the clinics, the Community Health Evangelism programs that started several years ago, and the program for Orphans and Vulnerable Children. In addition we will begin investigating the best options for our living arrangements when we are able to be there more permanently. We hope to build something that will be simple and comfortable.

If you are interested in more detailed updates and partnering with us in prayer, please email me at Rachel.weller@pcusa.org. I'm also on Facebook, where I will be posting pictures when I can—if you send me a friend request, send me a message letting me know how you know me.

Thanks for your prayerful support. Thanks for joining us in God's mission to Ethiopia.

Sincerely,
Rachel Weller

OFFERING ENVELOPES

Offering envelopes for 2012, for those who requested them, are available for pick up in fellowship hall.

You may still request envelopes by contacting the church office.

INTERESTING . . .

We've received a letter from a lady in California who has a great-grandfather and a grandmother, Edward and Nana Thurman, buried in our church cemetery. We've sent a copy of our church history "The Story of South Plains" prepared by Marion Thompson to help with her genealogy work.

Maybe we'll hear from her again -

IMPACT

IMPACT, our interfaith mission for a just and righteous community, has reported on past efforts and our future plans.

Past Efforts: After learning that pre-school and grades 1-3 have such long-term effects on our children, we focused on the availability of pre-school experiences for low income families. Albemarle County has increased the number of pre-schoolers by 16%, especially those from low income families. Charlottesville added two new classes. Among our long-range plans is the expansion of this work into Fluvanna and other counties.

Another recent initiative concerns the lack of available psychiatric services, especially in-patient care for children. Impact chose to address moderate mental health issues which affect crowding in our jails and homelessness on our streets. Better use of funds is now providing medications to reduce recidivism when persons with moderate problems are jailed. More housing for the mentally ill is slowly becoming available.

Future Plans: The issue for 2012 is job preparation, especially for younger adults. Although the unemployment rate for Virginia has gotten better, the need for good jobs continues. Conversation is underway with local educational institutions and employers. If you want to become involved in this effort over the next three months, contact Chad Wayner, our missions chair, or call IMPACT at 434 220-2450 Plan to attend the Nehemiah Action at University Hall on March 26.

WORSHIP INFORMATION FOR JANUARY

Celebration of the Lord's Supper Sunday, January 1
Preparing communion Linda Makranczy

Elders serving communion
(2nd service) Bill Claus, Pat Valentine, Doug Valentine, Jay Chronister

Greeters/Ushers
January 1 (2nd service) Jean Wardell and Martha Yocum

January 8 (1st service) Dana and Mike Lee
(2nd service) Julie and Frank Keplinger

January 15 (1st service) Betsy and Ed Douglas
(2nd service)

January 22 (1st service) Barbara and Warren Cain
(2nd service)

January 29 (1st service)
(2nd service)

Officer of the Week:

January 1 Linda Makranczy
January 8 Phil Keaton
January 15 June Mueller
January 22 Chad Wayner
January 29 Lyn Johnson



www.shutterstock.com · 23286154

Prayer Matters

Rebecca Newman	Healing prayers, Rebecca Kuhns' daughter
The family of Doris Kite at her death	
Prayers for Douglas family and babies	
The family of Robert Croyle at his death	
Katheryn	Prayers for stabilization of symptoms of manic depression
Abigail Faith Young	Further surgery, Bowie's great-granddaughter
Stan Harrison	Stroke
Douglas and Alexander Arner	Continued prayers
Ethan Blevins	Leukemia
Earl Biel	Healing prayers
Kingsley Brown and wife Janice	
Anne Cargill Baker	Westminster Presbyterian, brain tumor
Bill Morris	POJ, cancer
Laurie Day	Sandy and Larry Day's daughter, prolonged knee therapy
Pat Bigler	Chronister's friend, cancer
Miriam Fentress	Clapp's friend, leukemia
George Hambrick	Recovering at home
Michelle Johnson	Vascular Sarcoma
Pat and Connie Shepherd	Health issues, Keplinger family
Jenny Matthews	Friend of Kuhns with recurrence of cancer
Marge Hampton	Thoughtful prayers
Mary Harris	Neal Harris' mother, Our Lady of Peace
Theresa Naylor	Neal Harris' aunt, Our Lady of Peace
Janet Riddle	Healing prayers
Stan Goodsill	HealthCare, Westminster Canterbury
Cecil Shiflett	Recovering from surgery
Dreama Travis	Lucille Campbell's friend, cancer
Doris Richards	Marge Hampton's sister
Alf Dane	Lyn Johnson's uncle



Military and Government Service

Andrew Kemon	Carole Milks' great nephew, Army National Guard, Iraq
Canon Andrew White	Iraq, continues to conduct Christian worship service
Rob Young	Grandson of Barbara and Rick Bowie, USAF, U.S.
Rick Young	Grandson of Barbara and Rick Bowie, USAF, U.S.
Ralph Pruitt	Deployed to Iraq
Charles Jones	USN, Flight School, Meridian, MS
Josh Sobotincic	Gil and Carole Milks' grandson in U.S.
James Webb	Georgia, automobile accident
Marshall Baughman	Home in the U.S.
Michael Kolton	Joanne and Vito Addotta's grandson, Afghanistan
Mark Little	Recovering well with prosthesis
Doug Fenton	PCUSA chaplain-PTS
Andrew Scogna	Rehabilitation
Rob Jones	U. S. Army, Basic Training

- Happy Birthday Happy Birthday
- 4 Kay Payne
 - 7 Shirley Chronister
 - 10 Peter Schumann
 - 11 Bob Anderson
 - 12 Janet Riddle
 - 13 Penny Goodsell
 - 14 Ted Makranczy
 - 15 Harper Campbell
 - 17 Leah Wayner
 - 19 Billie Scharpf
 - 20 Chris Buck
 - Bernice Gibson
 - Joy Calfo
 - 21 Preston Stallings
 - Meg Taylor
 - 25 Marie Grant
 - 30 Shorty Norford
- Happy Birthday Happy Birthday



**PASTOR BOUREIMA
WITH FAMILY AND CONGREGATION**



AT THE LAST SESSION MEETING, MEMBERS APPROVED A SPECIAL OFFERING FOR NON-PERISHABLE FOOD ITEMS TO COINCIDE WITH THE NATIONAL SOUPER BOWL OF CARING OFFERING ON FEBRUARY 5, 2012

BRING YOUR FOOD ITEMS TO CHURCH WITH YOU ON FEBRUARY 5!

PICTORIAL DIRECTORY
Correct proofs of our upcoming pictorial directory have been sent back to Olan Mills, so we should receive our directories in a few weeks.

DEADLINE FOR FEBRUARY REFLECTOR JANUARY 29



South Plains was able to contribute a communion service set to this church in Niger. Here is a translated message from Pastor Boureima.

“Joyeaux Noel Team Link to United States and Niger Beloved, has that glorious day of the celebration of the birth of our savior Jesus Christ, our congregation, New Hope Church and my family wish you a happy new year 2012. For us, it will be awkward to do without it without you sent a note of gratitude for all the support you have given to our congregation and my small family. Apart from the prayers and advice, this year 2011, we received the visit of the teams in the work of evangelization, which materials the Lord’s Supper, and also the grant of the education of my children. It our privilege your cooperation and friendship.

Today we celebrated the great rejoicing in Christ, about 100 people were present. Our message is based on Galatians 4.4 Monitoring and send the photo if you like it our salvation and gain our thanks to Pastor David K. Garth, South Plains Presbyterian Church for the communion service set.

Boureima

CONGREGATIONAL MEETINGS
Session has called congregational meetings at 9:30am and noon on January 8, 2012, for the purpose of making changes in the minister’s call, reviewing the budget, changing procedures for congregational meetings, and calling a meeting of the corporation.

THE SESSION

Class of 2011
Jay Chronister
Linda Makranczy
Travis Taylor

Class of 2012
Warren Cain
Julie Keplinger
June Mueller

Class of 2013
Carl Buck
Kellee Eastwood
Chad Wayner

SESSION CONTACT PERSON

Clerk of Session	Linda Harrison 296-9992
Administration and Finance	Warren Cain 295-2113
Building and Grounds	Carl Buck 244-0871
Christian Education	Kellee Eastwood 589-2705
Congregational Care	Julie Keplinger* 977-0189
Evangelism and Outreach	Travis Taylor 973-2318
Missions	Chad Wayner 227-2027
Fellowship	June Mueller 589-8221
Long-Range Planning	Jay Chronister 589-3685
Worship	Linda Makranczy 589-2651

*Trustee

CHURCH STAFF

Pastor	David K. Garth, ThD
Treasurer	Doug Valentine
Organists	Eleanor Dickerman Margaret Moore
Presbyterian Women	Mary Reitsma, Kellee Eastwood, Co-Moderators
Administrative Assistant	Dana Lee

REGULARLY-SCHEDULED EVENTS

Church School	9:45am
Morning Worship	8:30am & 11am
Choir	Wednesdays, 7pm
Session	Third Tuesday, 7pm
Presbyterian Women	Second Monday, 9:30am
The South Plains Mission Crafters and Benevolence Society	Third Sunday, noon
Agape	As scheduled
Ungroup	As scheduled

southplainspc@gmail.com
southplainspc.org



January

Sun	Mon	Tue	Wed	Thu	Fri	Sat
1 <i>Rev. Dale Dealtrey preaching</i>	2	3	4 <i>Choir, 7pm</i>	5	6	7
8 <i>Congregational meetings, 9:30 & noon</i>	9 <i>Presbyterian Women, 9:15am</i>	10	11 <i>Choir, 7pm</i>	12 <i>Care and Concern mtg., 3pm</i>	13	14
15 <i>Ordination of Elders</i> <i>Mission Crafters</i>	16	17 <i>Endowment mtg.</i> <i>Session, 7pm</i>	18 <i>Choir, 7pm</i>	19	20	21
22	23	24	25 <i>Choir, 7pm</i>	26	27	28
29 <i>Hymnsing</i>	30	31				

